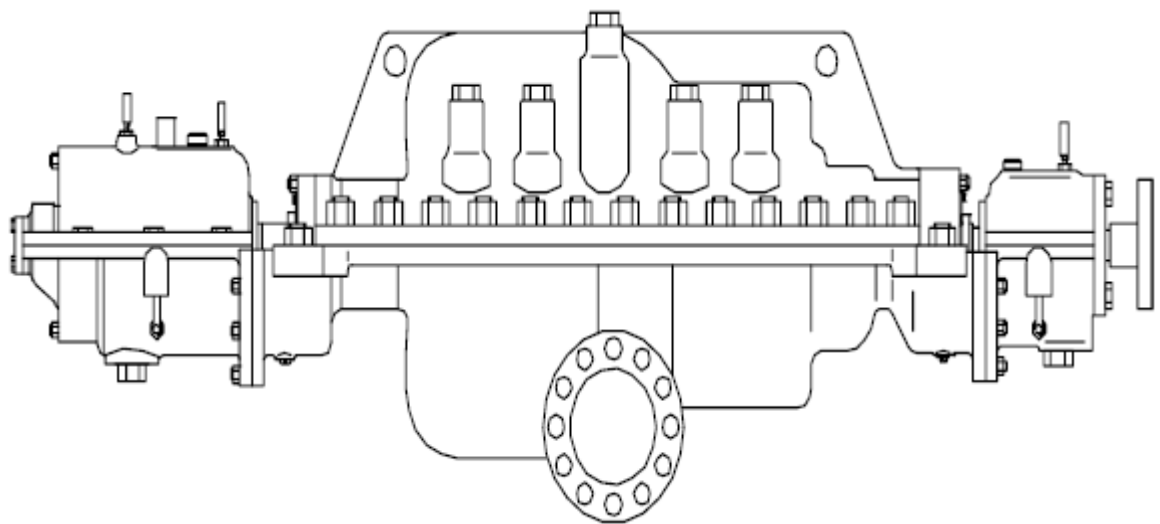




# **APIFLO-MK, APIFLO-MKA Series**

## **Horizontal Axially-split Multistage Pump**

**According to API 610 10<sup>th</sup>**



**Capacity:** 10~800m<sup>3</sup>/h (50Hz) up to 960 m<sup>3</sup>/h (60Hz)

**Head:** ~3000m (50Hz) ~4320m (60Hz)

**Pressure:** up to 15 MPa

**Temperature:** -40~200 °C

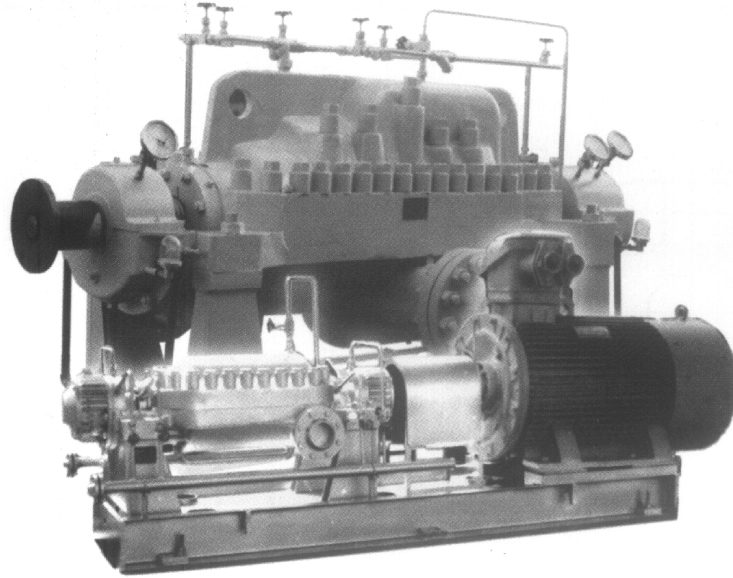
**Application:**

For handling boiler water, seawater, and offshore platform injecting water as well as oil products, petrochemical process and chemical process products.



---

**1 General**



**APIFLO-MK, APIFLO-MKA Series**

---



- ◇ APIFLO-MK and APIFLO-MKA series of pumps can handle boiler water, seawater, and offshore platform injecting water as well as oil products, petrochemical process and chemical process products.
- ◇ They are designed to be of horizontal, axially split multistage centrifugal pumps. Impellers are arranged completely symmetrically and having reliable hydraulics performance.
- ◇ Their discharge and suction nozzles are located at the bottom half casing, so the disassembly and assembly can be done without disturbing the piping system.
- ◇ APIFLO-MK series of pumps apply ring-type elastic sealing for each stage, shin gaskets for casing to prevent leakages due to pressure and temperature.
- ◇ APIFLO-MKA series of pumps are of volute casing type. Impellers are individually secured to the shaft.
- ◇ According to the standard of API 610.
- ◇ Axial thrusts are mainly absorbed by balance device. The residual thrusts are absorbed by anti thrust bearings.
- ◇ Mechanical seals with cartridge design. Seal flushing and cooling plan according to the standard of API 610 and API 682.

## 2 Rotation direction

*Clockwise viewed from drive-end.*

## 3 Designation

APIFLO-MK 85 - 80 x 6

