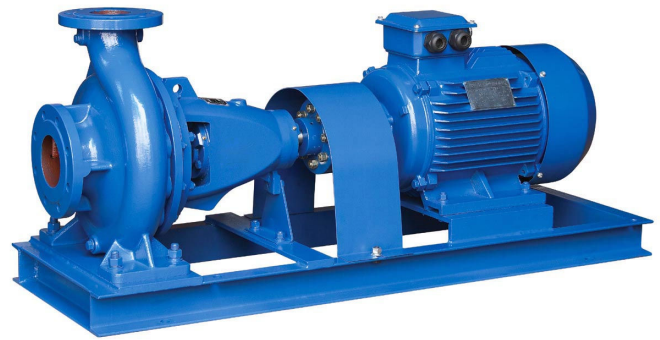




Waterflo WF Series Centrifugal Pumps

WF SERIES DIN 24255 - WF-100-26 CI-BR-SS-MS

Series WF =	End suction centrifugal pump
Discharge Size	100mm
Impeller Nominal Size	260mm
Casing material	CI=Cast Iron Body DI=Ductile Cast Iron Body
Impeller Material	CI=Cast Iron Impeller BR=Bronze Impeller
Shaft Material	SS=Stainless Steel AISI 420
Seal Type	MS=Mechanical Seal GP=Gland Packing



SpecialCode-----
G=Bigger Shaft
H=Double Angular Contact Bearing
OL=Oil Lubricator



Description:

The WF pumps series comply fully to the European standard DIN24255. This standard covers both performance and dimensions.

The WF pumps series are used for pumping clean water or liquids with characteristics similar to water. They are suitable for plants, mines, city water supplies, air-conditioning coolers, fire fighting system and irrigation.

For a pump of same the model, the performance can be changed by trimming the outer diameter of the impeller. Only four shafts are required to cover the total range, and this gives many common interchangeable parts for pumps fitted to the same shaft. Just like the shaft, the bearing house has only four sizes for the whole series.

The pump has a back pull-out design, and when a suitable spacer coupling is fitted to a direct coupled unit, the casing and motor can remain in position while all other pump parts can be removed for simple and quick maintenance.

Design: Horizontal, Single-Stage Volute Casing pumps with dimensions and nominal ratings standard to DIN24255.

Type: End Suction Centrifugal, back pull-out

Flange: DIN2332 PN 10RF

Direction of Rotation:-- Clockwise as viewed from the drive side.

Material:

Casing - Cast Iron and Ductile Iron standard; optional Stainless Steel

Impeller - Bronze standard, optional Cast Iron & Stainless Steel

Shaft - AISI420 standard, optional AISI304 & AISI316

Shaft Seal - Mechanical Seal standard
Carbon-Sic/Vinton (optional)
Optional Gland Packing;

Operating Range:

Flow Rate(Q) : 2 -1100 m³/h

Head(H) : 2 - 150 m

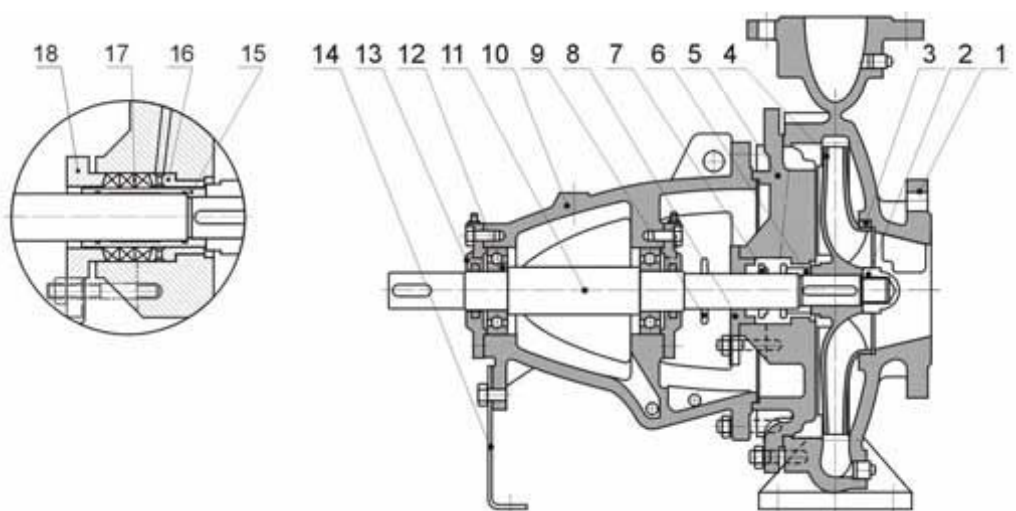
Speed : 1450-2900 rpm (50HZ)
1750-3500 rpm (60HZ)

Temperature : -10°C to 105°C standard; optional 105°C

Using pressure: 10Bar standard; optional 16Bar

Name

- 1 Volute casing
- 2 Impeller nut
- 3 Wear ring
- 4 Impeller
- 5 Casing cover
- 6 Shaft spacer
- 7 Mechanical seal
- 8 Seal cover
- 9 Slinger
- 10 Bearing housing
- 11 Shaft
- 12 Bearing
- 13 Bearing cover
- 14 Support foot
- 15 Packing sleeve
- 16 Seal cage
- 17 Gland packing
- 18 Gland cover





Description:

WF pump sets are comprised of the WF pump and standard electric motor which are connected by coupling and mounted on a steel metal base. The advantage is that we could easily select the motor and couple to the WF pump. The coupling adopts the flexible pin and bush design, which makes the pump set more stable with minimal vibration and longer life-span as compared to the 'claw-type' coupling. The steel metal base is joined by profiled steel bar for strength. Fitting surface where the pump and motor foots seated, are lapped by machine with high precision. The coupling guard is designed to cover the coupling to provide greater safety and security.

Operating Range:

Flow Rate (Q) : 2 - 1100 m³ /h

Total Head (H) : 5 - 150m

Speed : 1450-2900 rpm (50HZ)

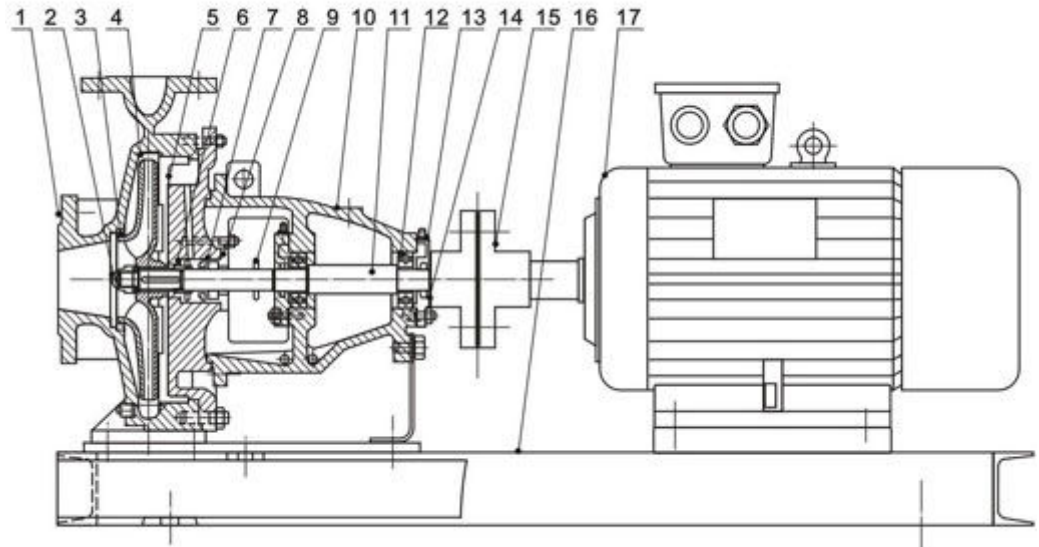
1750-3500 rpm (60HZ)

Temperature : -10 C -105 C standard; optional 150 C

Casing Pressure : 10Bar standard; optional 16Bar

Name

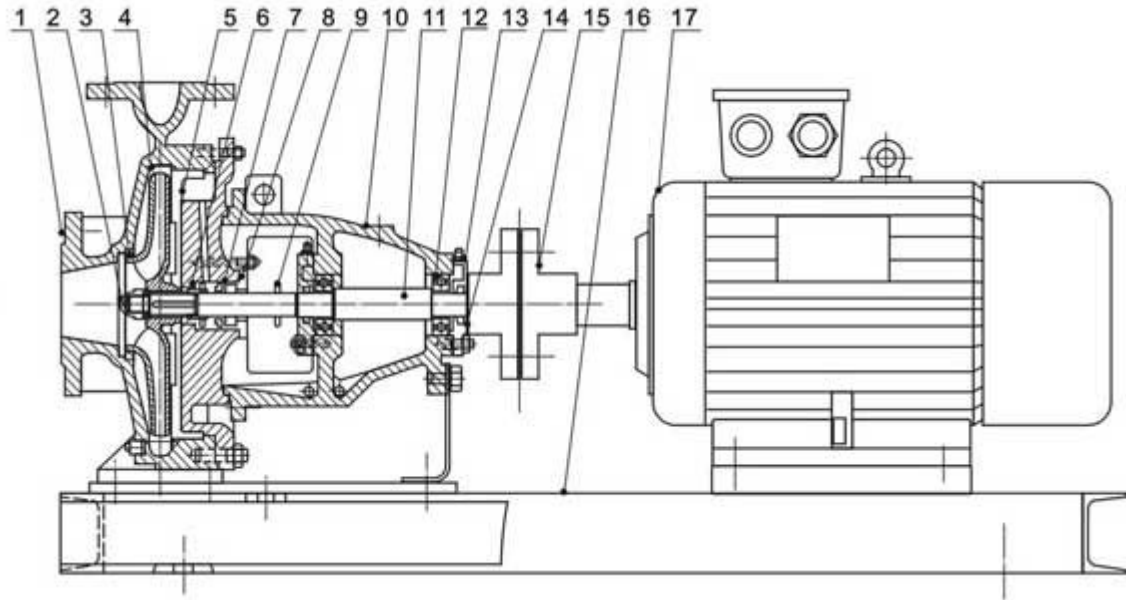
- 1 Volute casing
- 2 Impeller nut
- 3 Wear ring
- 4 Impeller
- 5 Casing cover
- 6 Shaft sleeve
- 7 Mechanical seal
- 8 Seal cover
- 9 Slinger
- 10 Bearing housing
- 11 Shaft
- 12 Bearing
- 13 Bearing cover
- 14 Support foot
- 15 Coupling
- 16 Steel metal base
- 17 Electric motor





WF Series Direct Coupled Pump

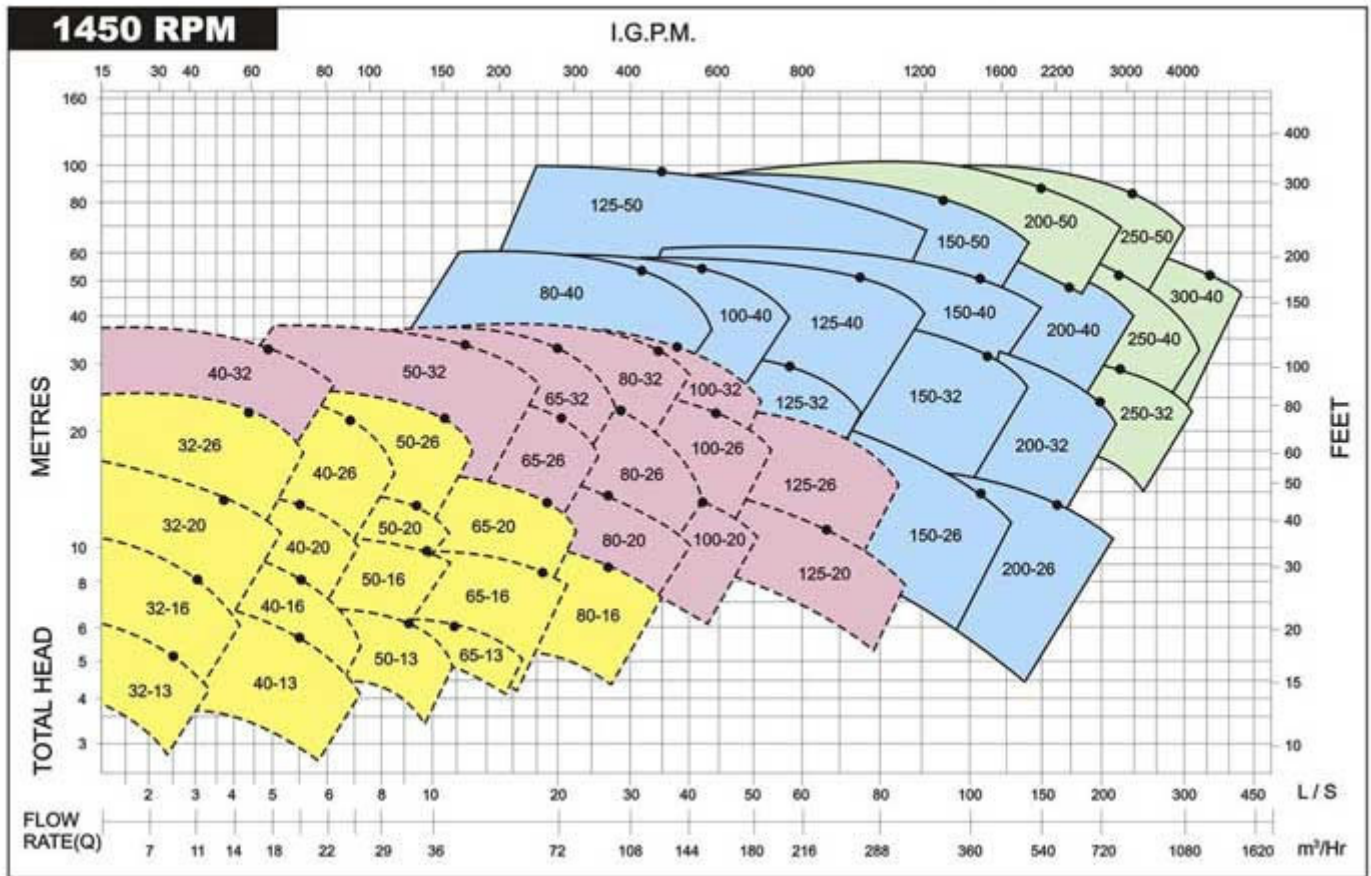
- | No. | Name |
|-----|------------------|
| 1 | Volute casing |
| 2 | Impeller nut |
| 3 | Wear ring |
| 4 | Impeller |
| 5 | Casing cover |
| 6 | Shaft sleeve |
| 7 | Mechanical seal |
| 8 | Seal cover |
| 9 | Slinger |
| 10 | Bearing housing |
| 11 | Shaft |
| 12 | Bearing |
| 13 | Bearing cover |
| 14 | Support foot |
| 15 | Coupling |
| 16 | Steel metal base |
| 17 | Electric motor |





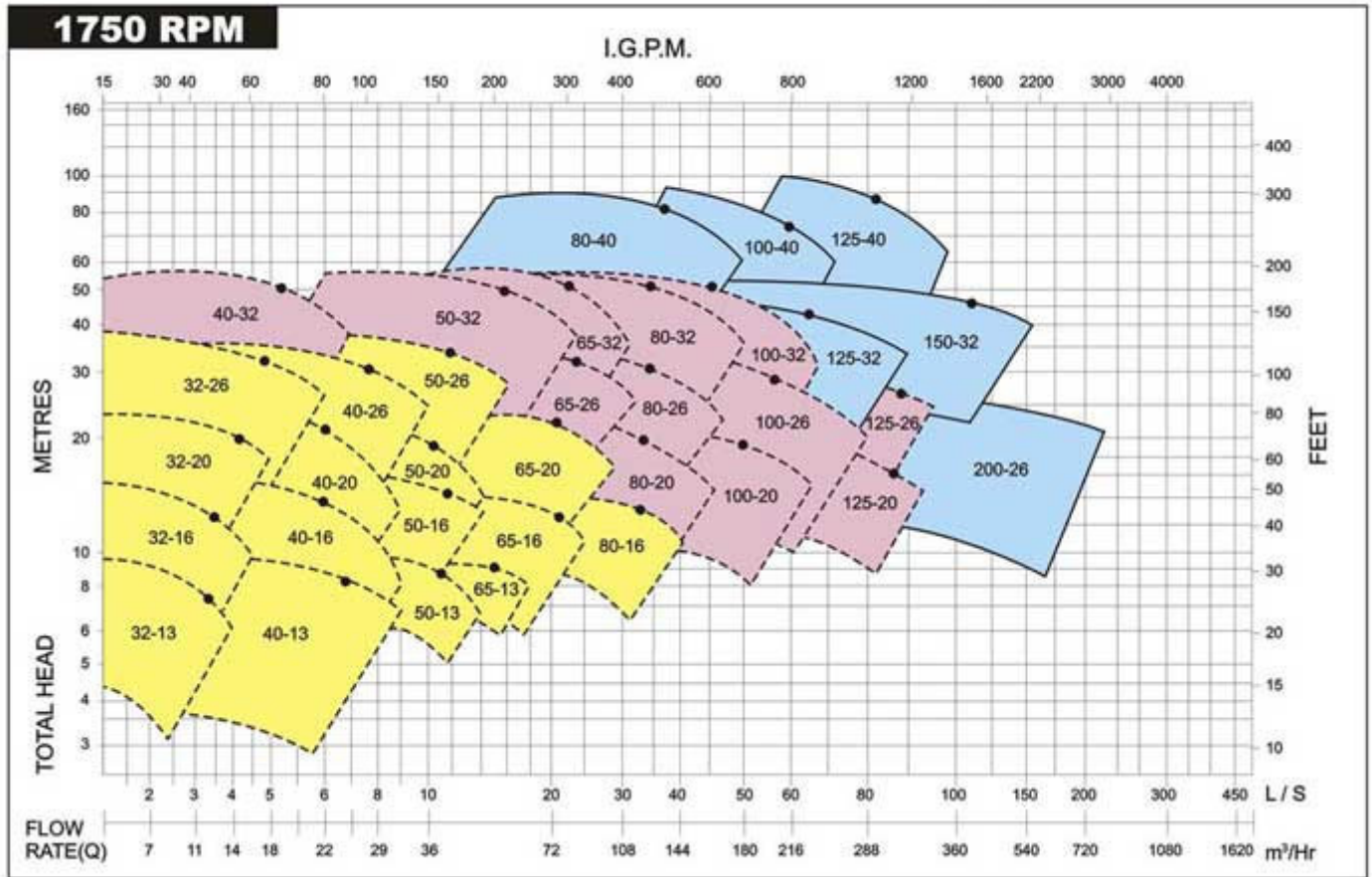
Flange mating dimensions to ISO2084 PN16 (DIN232 PN10RF)										
PN 10										
DN ₂ / Dn ₂	32	40	50	65	80	100	125	150	200	250
∅D	140	150	165	185	200	220	250	285	340	405
∅K	100	110	125	145	160	180	210	240	295	350
∅ ₂ x number	∅18×4	∅18×4	∅18×4	∅18×4	∅18×8	∅18×8	∅18×8	∅22×8	∅22×8	∅26×12

50Hz Performance



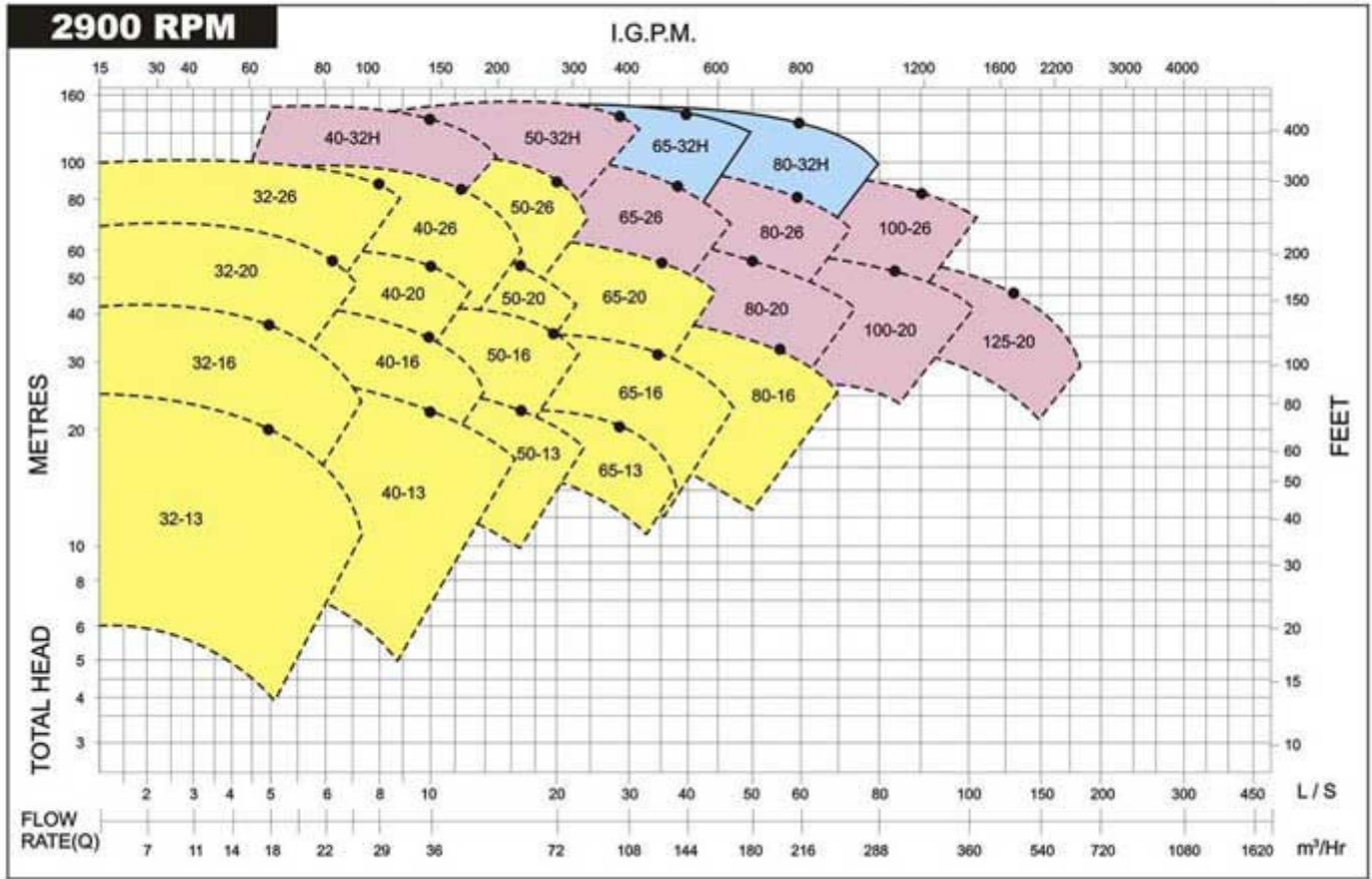


60Hz Performance





50Hz Performance





60Hz Performance

